

Kit Inventory Sheet

Main Kit Boxes

Box #1 of 5

1	Differential Drop
1	Steering Drop
2	Steering Drop Boots
2	Strut Support Frame Mounts
2	Rear Lift Blocks
1	Installation Instruction Packet

Box #2 of 5

1	Front Crossmember Drop
2	Sway Bar Drops
2	Rear Support Struts
2	U-Bolt Kit
1	Hardware Box

Box #3 of 5

1	Rear Crossmember Drop
1	Skid Plate
2	Center Strut Supports
2	Shocks

Box #4 of 5

1	Spindle (Driver)
1	Strut Extension (Driver)
2	Strut Extension Clamps
2	Brake Line Drops (Driver & Passenger)

Box #5 of 5

1	Spindle (Passenger)
1	Strut Extension (Passenger)
2	Strut Extension Clamps
1	Rear Brake Line Drop
1	Emergency Brake Cable Drop

Installation Instructions Packet

1	Opening Letter
1	Kit Inventory Sheet
1	Instruction Packet (Text)
1	Picture Packet (Figures)
1	Diagram Packet (Line Art)

DRIVER side parts marked with **RED** dot
PASSENGER side parts marked with **BLUE** dot

Hardware Box

Bag #1, Front & Rear Crossmember

4	M18-2mm x 150mm Bolt w/ welded eccentrics
4	M18-2mm Nylock Nut
2	Alignment Eccentric

Bag #2, Differential Drop & Steering Drop

1	7/16"-14 x 5 1/2" Bolt
2	7/16"-14 x 3 3/4" Bolt
5	7/16"-14 Nylok Nut
6	7/16" SAE Washer
2	M16-1.5mm x 60mm
2	5/8" SAE Washer
3	1/2" Lock Washer
9	1/2" SAE Washer
2	30-45mm Metric Hose Clamps
4	50-70mm Metric Hose Clamps
3	1 1/4" Cam Follower Bearings

Bag #3, Crossmember Supports & Sway Bar Drops

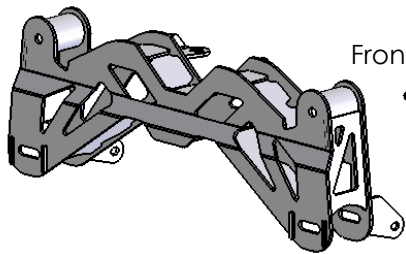
4	7/16"-14 x 1 1/2" Bolt
4	7/16"-14 Nylok Nut
8	7/16" SAE Washer
4	1/2"-13 x 6" Bolt
8	1/2"-13 x 4 1/2" Bolt
12	1/2"-13 Nylok Nut
24	1/2" SAE Washer

Bag #4, Skid Plate & Strut Extensions

8	7/16"-14 x 3 3/4" Bolt
8	7/16"-14 Nylok Nut
16	7/16" SAE Washer
4	1/2"-13 x 1 1/2" Countersink
2	3/4"-10 x 4 1/4" Bolt
2	3/4"-10 Nylok Nut
4	3/4" SAE Washer
1	Front Nut Plate (Small) w/ (2) welded 1/2"-13 nuts
1	Front Nut Plate (Large) w/ (2) welded 1/2"-13 nuts

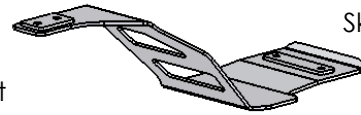
Bag #5, Steering Boot Flanges & Brake Line Brackets

4	#10-32 x 1/2" Cap Screw
4	1/4"-20 x 1" Bolts
4	1/4"-20 Nylok
8	1/4" SAE Washer
1	Steering Boot Flange 2.250" OD (Driver)
1	Steering Boot Flange 2.500" OD (Passenger)
2	Large Plastic Couplers
2	Small Plastic Couplers
2	5" Large Rubber Vacuum Hoses
2	2" Small Rubber Vacuum Hoses
10	Zip Ties

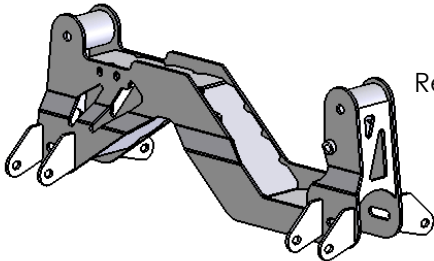


Front Crossmember Drop Bracket

- Alignment Eccentric {Welded to Bolt}, Qty (4)
- Alignment Eccentric {Free}, Qty (4)
- Cam Follower Bearing, Qty (3)
- Skid Plate Front Mount Nut Bar, Short

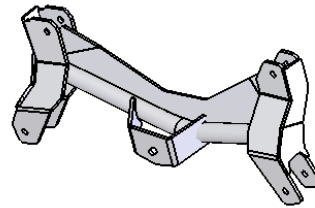


Skid Plate

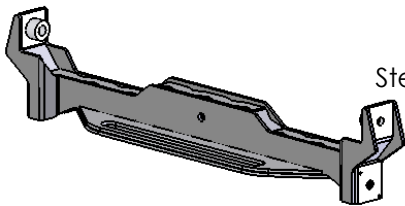


Rear Crossmember Drop Bracket

- Skid Plate Rear Mount Nut Bar, Long

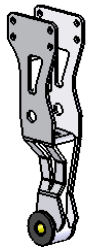


Differential Drop Bracket



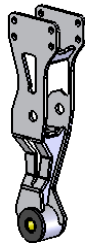
Steering Rack Drop Bracket

- Steering Boot Flange, 2_1/2" OD, Driver
- Steering Boot Flange, 2_1/4" OD, Passenger



Strut Extension Bracket, Driver

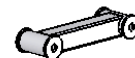
- Strut Extension Clamp, Qty (4)



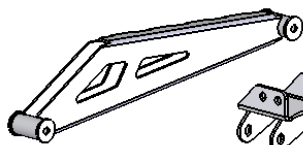
Strut Extension Bracket, Passenger



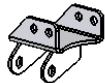
Sway Bar Drop, Qty (2)



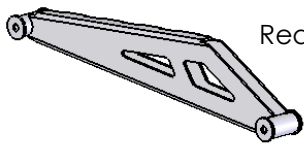
Center Support Strut, Qty (2)



Rear Control Arm Support Strut, Driver



Rear Control Arm Support Strut Frame Mount, Driver Shown



Rear Control Arm Support Strut, Passenger



Rear Control Arm Support Strut Frame Mount, Passenger



Front Brake Drop, Driver



Front Brake Drop, Passenger



Rear Brake Drop



Emergency Brake Cable Drop



Rear Lift Block, Qty (2)

All Driver Side Parts Are Marked With A Red Dot

All Passenger Side Parts Are Marked With A Blue Dot

RIZE INDUSTRIES, LLC.

'04-'06 Ford F150 4x4
Suspension Lift System
Kit Component
Identification Drawing

SIZE	DWG. NO.	REV.
	A F150BoM 060410	
SCALE:1:14	WEIGHT:	SHEET 1 OF 1