

Kit Inventory Sheet

Main Kit Box(s)

1	Idler Arm Frame Mount
1	Idler Arm
1	Center Link
1	Panhard Rod Axle Mount (PRAM)
1	Panhard Rod Axle Mount Plate
2	Coil Spring Spacers
2	Upper Coil Over Mounts
2	Lower Coil Over Mounts
2	Sway Bar Links
2	Sway Bar Relocation Brackets
1	Brake Line Kit
2	27" Limit Straps

See Fig-01

DRIVER side parts marked with **RED** dot
PASSENGER side parts marked with **BLUE** dot

Hardware Box

Bag #6, Idler Arm & Idler Arm Mount

2	1/2"-13 x 1_1/2" Bolt
2	1/2"-13 Nylok Nut
4	1/2" SAE Washers
2	M20-2.5 X 150mm Bolts
2	M20-2.5 Nylock Nuts
2	M20 Washers
4	20mm ID SSt Spacers

Bag #7, Center Link

1	3/4"-10 x 3_3/4" Bolt
1	3/4"-10 Short Nylok
1	3/4" SAE Washer
1	1" Spherical Bearing (1_1/4"-12 RH Thread)
1	1-1/4"-12 Jam Nut
2	1" Heim Misalignment Spacer, Short

Bag #8, Panhard Rod Axle Mount

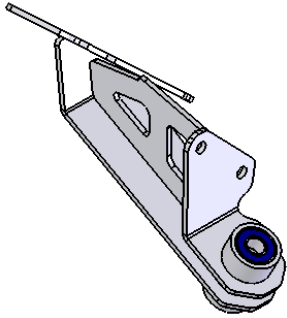
4	7/16"-14 x 1_1/2" Bolt
4	7/16"-14 Nylok Nut
8	7/16" SAE Washer
2	1/2"-13 x 3" Bolt
1	PRAM Nut Plate
2	1/2" SAE Washer
1	3/4"-10 x 4_3/4" Bolt
1	3/4"-10 Nylok Nut
1	3/4" SAE Washer
2	1" Heim Misalignment Spacer, Medium
1	3/4" ID Panhard Rod Taper Spacer

Bag #9, Coil Spring Spacers

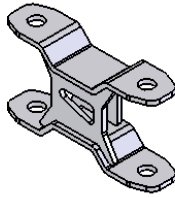
6	7/16"-14 Nylok Nut
6	7/16" SAE Washer
2	M14-1.75 x 30mm Bolt (Use Is Optional)

Bag #10, Sway Bar Relocation Brackets

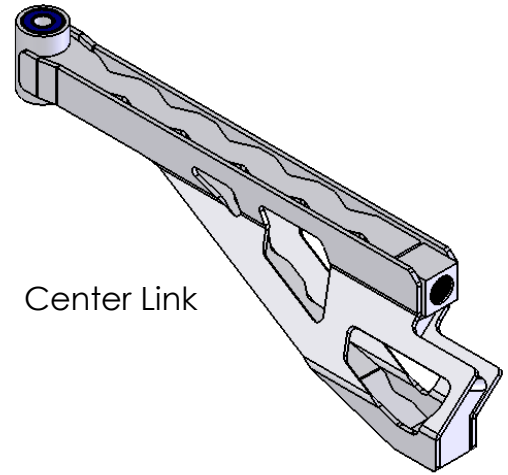
8	7/16"-14 x 1_3/4" Bolt
8	7/16"-14 Nylok Nut
16	7/16" SAE Washer
2	9/16"-11 x 5" Bolt
2	9/16" SAE Washer
2	SM Nut Plate
2	5/8"-11 x 2_3/4" Nylok Nut
2	5/8"-11 Nylok Nut
2	5/8" SAE Washer
2	5/8" Heim RH
2	5/8" Heim LH
2	5/8" Jan Nut RH
2	5/8" Jan Nut LH
4	9/16" ID Tapered Misalignment Spacer
4	5/8" ID Tapered Misalignment Spacer



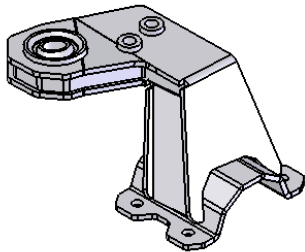
Idler Arm Frame Mount



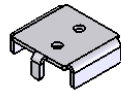
Idler Arm



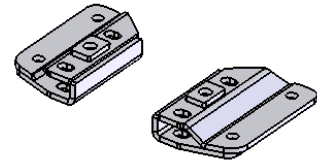
Center Link



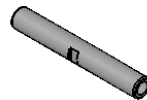
Panhard Rod Axle Mount



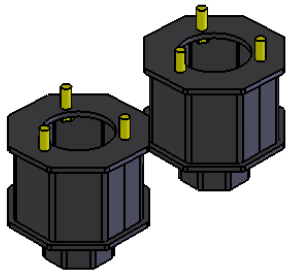
Bump Stop Pad
Drill Template



Sway Bar Relocation Brackets



Sway Bar Link, 9 inch
Qty (2)



Top Spring Spacers



Coil Bucket
Drill Template



1" Misalignment Spacer (Medium)
Qty (2)



1" Misalignment Spacer (Short)
Qty (2)



20mm ID Bearing Spacer
Qty (4)



3/4" ID Tapered Panhard Rod
Axle Mount Spacer Qty (1)



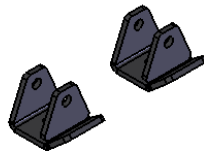
5/8" ID Tapered Misalignment Spacer
Qty (4)



9/16" ID Tapered Misalignment Spacer
Qty (4)



Upper Coil Over Mounts
(Use is Optional)



Lower Coil Over Mounts
(Use is Optional)

● All Driver Side Parts Are Marked
With A Red Dot

● All Passenger Side Parts Are Marked
With A Blue Dot

RIZE INDUSTRIES, LLC.

'05-'06 Ford Super Duty
12" Suspension Lift System
Kit Component
Identification Drawing

SIZE	DWG. NO.	REV.
SCALE:1:8	A05SD 12in KIT BoM	SHEET 1 OF 1
WEIGHT:		