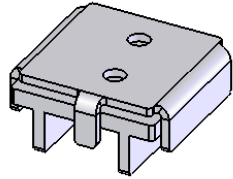
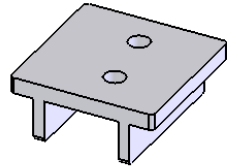


Position



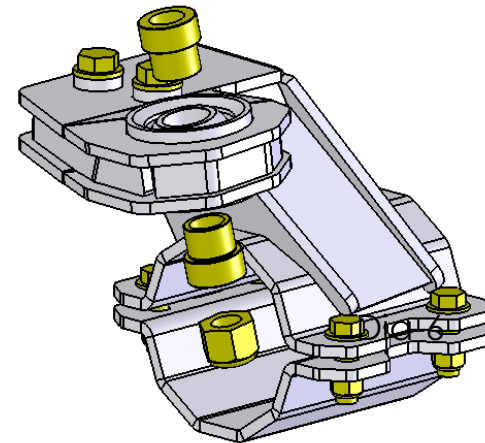
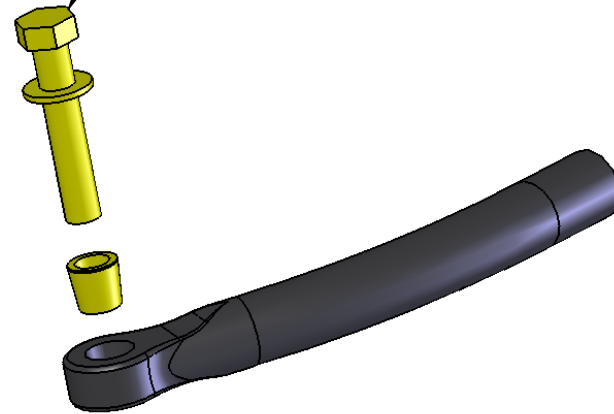
Mark

Dia-4



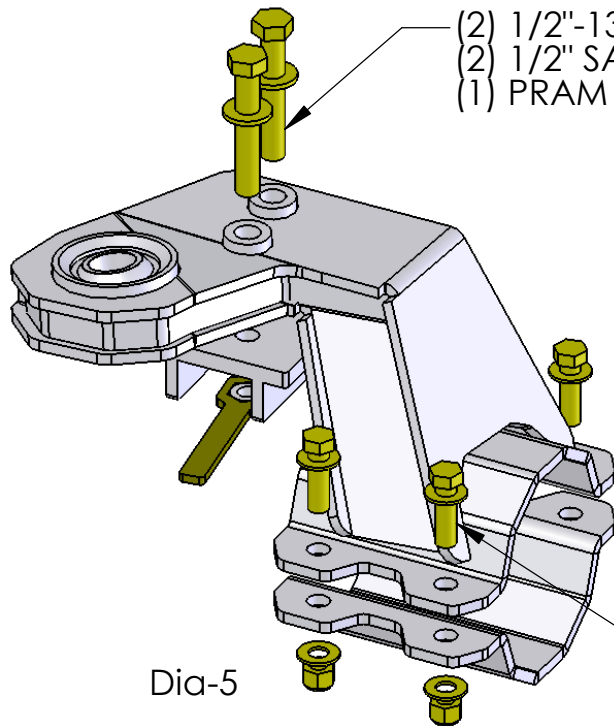
Drill

- (1) 3/4"-10x4_3/4" Bolt
- (1) Panhard Rod Taper Spacer
- (2) 1" Misalignment Spacer (Medium)
- (2) 3/4" SAE Washer
- (1) 3/4"-10 Nylock Nut



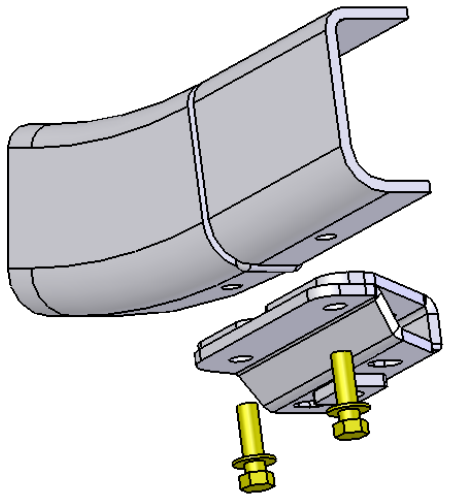
Dia-6 & Dia-7

- (2) 1/2"-13x2_3/4" Bolt
- (2) 1/2" SAE Washer
- (1) PRAM Nut Plate

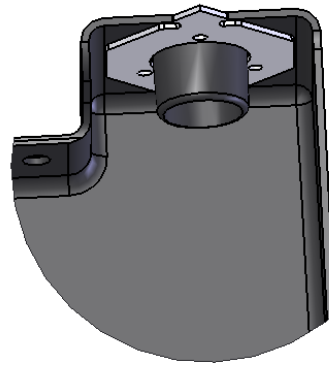


Dia-5

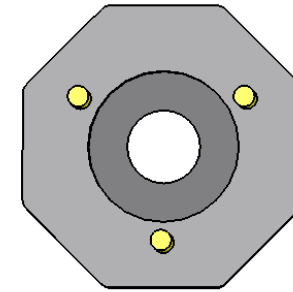
- (4) 7/16"-14x1_1/2" Bolt
- (8) 7/16" SAE Washer
- (4) 7/16"-14 Nylok Nut



Dia-8A
Passenger Side Shown

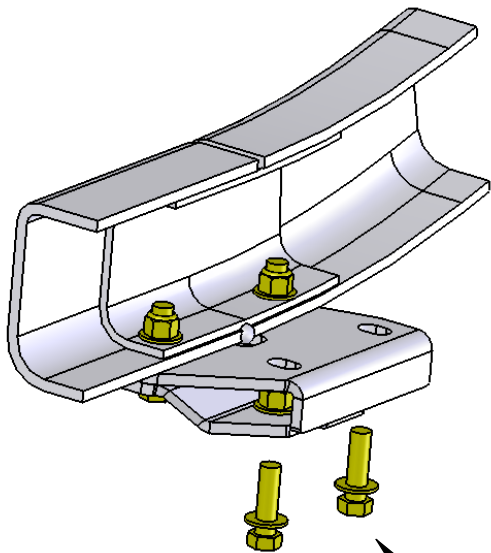


Front of Vehicle →
Dia-9a
Passenger Side Shown

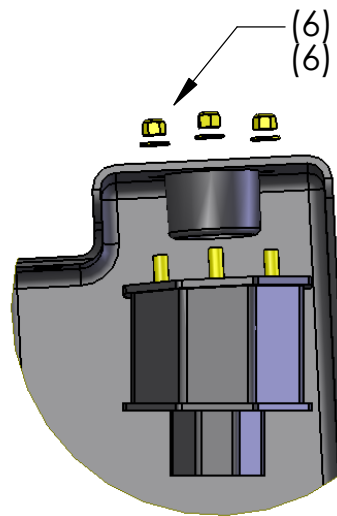


Front of Vehicle →

↓
Outside of Wheel Well

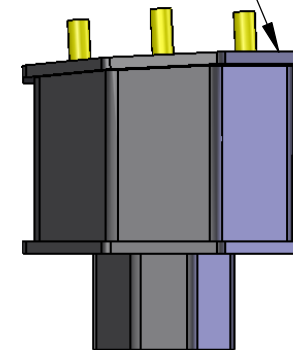


Dia-8B
Passenger Side Shown



Dia-9b
Passenger Side Shown

↑
(6) 7/16"-14 Nylock Nut
(6) 7/16" SAE Washer

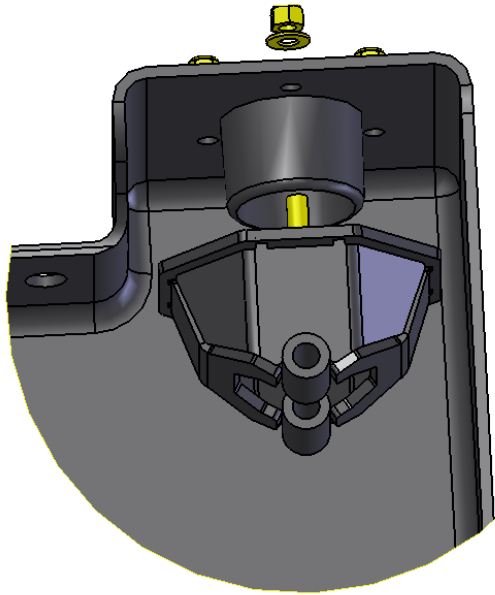


Dia-10
Passenger Side Shown

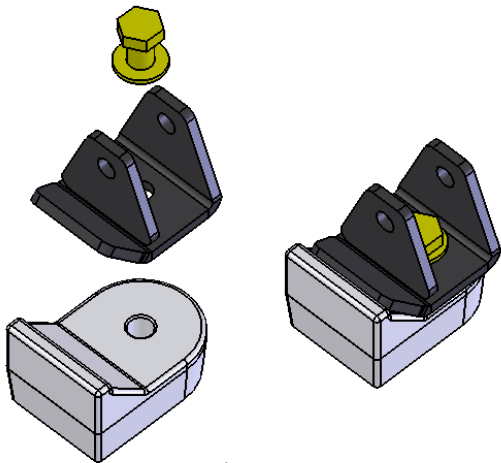
↑
Highest Point Towards
Front & Outside of Vehicle

Front of Vehicle →

↑
(8) 7/16"-14x1_3/4" Bolt
(16) 7/16" SAE Washer
(8) 7/16" -14 Nylok Nut



Dia-11

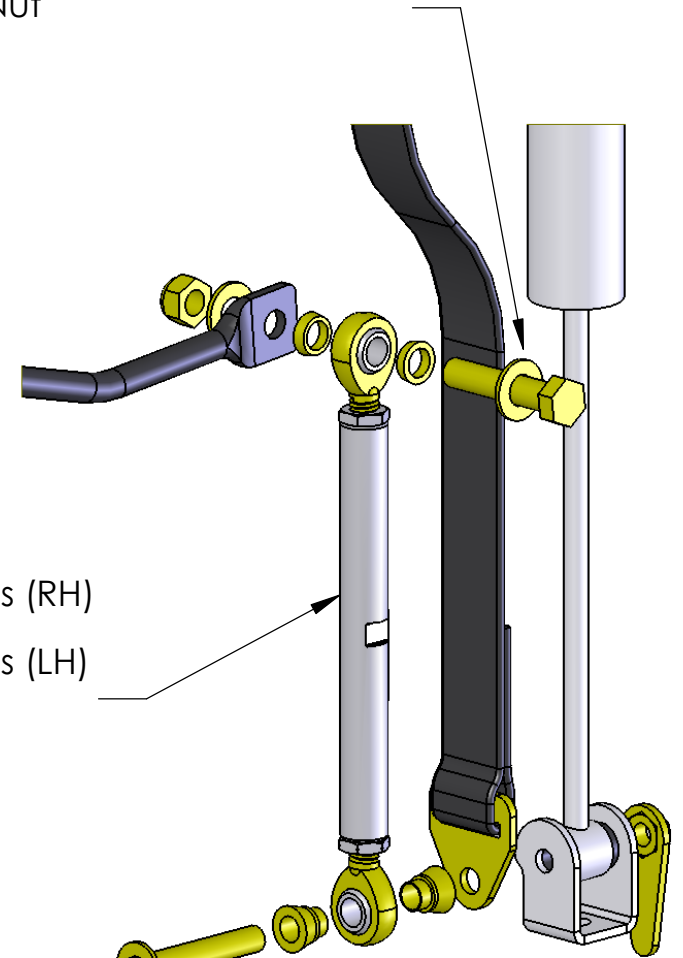


Dia-12

- (2) 5/8"-11x2_3/4" Bolt
- (4) 5/8" ID Tapered Misalignment Spacers
- (4) 5/8" SAE Washers
- (2) 5/8"-11 Nylok Nut

- (2) 9" Sway Bar Link
- (2) 5/8" Spherical Bearings (RH)
- (2) 5/8"-18 Jam Nut (RH)
- (2) 5/8" Spherical Bearings (LH)
- (2) 5/8"-18 Jam Nut (LH)

- (2) 9/16"-11x5" Bolt
- (2) 9/16" SAE Washer
- (2) 27" 4-Ply Limit Strap
- (4) 9/16" ID Misalignment Spacers
- (2) SM Nut Plate



Dia-13
Passenger Side Shown